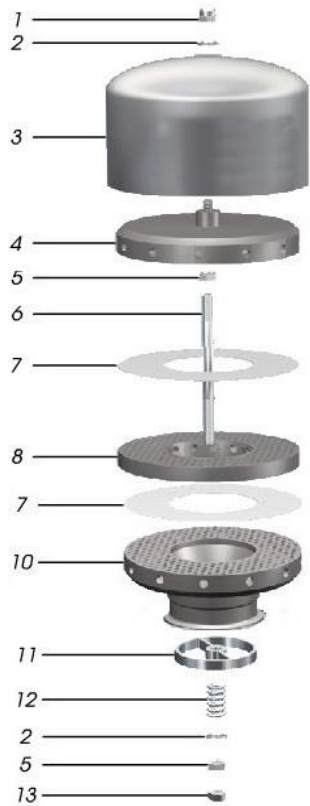


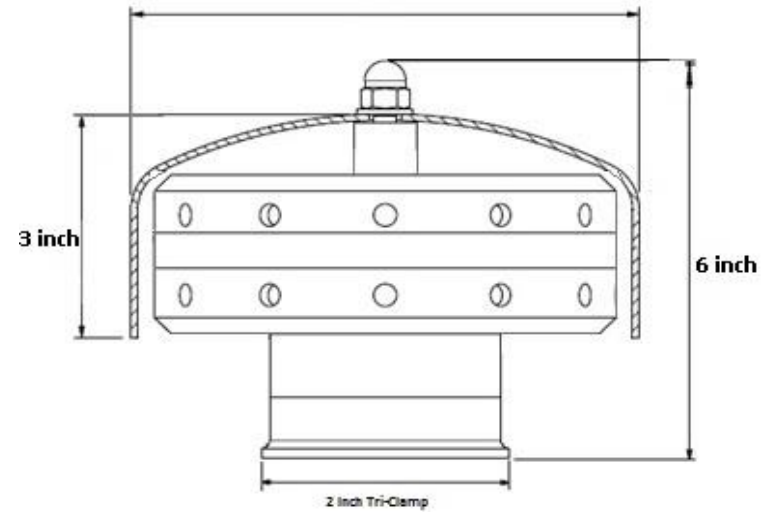
Drawings For:



Filter Specs	
Model	BA-1002 200T
Replacement media	FMT-10-S20
Connection Size	2 Inch
Connection Type	Tri-Clamp
Design Pressure	Ambient
Flow capacity	5 SCFM

Materials of Construction	
Vent hood	316 SS
Segmented Discs	316 SS
Filtration Media	PTFE

Pressure Drop Chart			
Flow(SCFM)	Dry	30% Clog	50% Clog
1	0.0580	0.0829	0.1160
2	0.1160	0.1657	0.2320
3	0.1740	0.2486	0.3480
4	0.2320	0.3314	0.4640
5	0.2900	0.4143	0.5800
6	0.3480	0.4971	0.6960
7	0.4060	0.5800	0.8120
8	0.4640	0.6629	0.9280
9	0.5220	0.7457	1.0440
10	0.5800	0.8286	1.1600
11	0.6380	0.9114	1.2760



Equipment Tag



MICROPURE® FILTRATION

5/21/2014

NTS

Drawing No.

BA-1002200T