



MICROPURE® FILTRATION

MICROPURE® CULINARY STEAM MINI FILTER SERIES					
DATA SHEET		DATASHEET		DATA SHEET	
PDF-602 Mini		PDF-604 Mini		PDF-606 Mini	
Technical Data		Technical data		Technical Data	
Capacity @ 15 PSIG	30 lbs/hr	Capacity @ 15 PSIG	60 lbs/hr	Capacity @ 15 PSIG	90 lbs/hr
Maximum Pressure	16 Bar/232 psig	Maximum Pressure	16 Bar/232 psig	Maximum Pressure	16 Bar/232 psig
Connection	1/2" FNPT	Connection	1/2" FNPT	Connection	1/2" FNPT
Weight	4.2 pounds	Weight	4.4 pounds	Weight	4.6 pounds
Material	Aisi 304	Material	aisi 304	Material	aisi 304
Micron Rating	3 um Absolute	Micron Rating	3 um Absolute	Micron Rating	3 um Absolute
Filter Membrane	2 x FMS-06-003 Woven SS	Filter Membrane	4 x FMS-06-003 Woven SS	Filter Membrane	6 x FMS-06-003 Woven SS

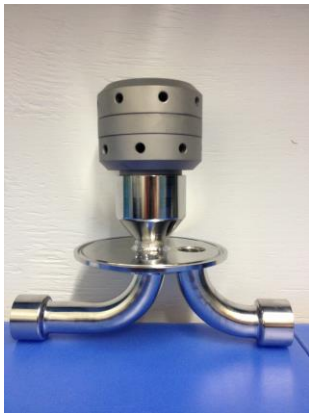


Photo of PDF-602
without housing cover



Photo of PDF-604
without housing cover



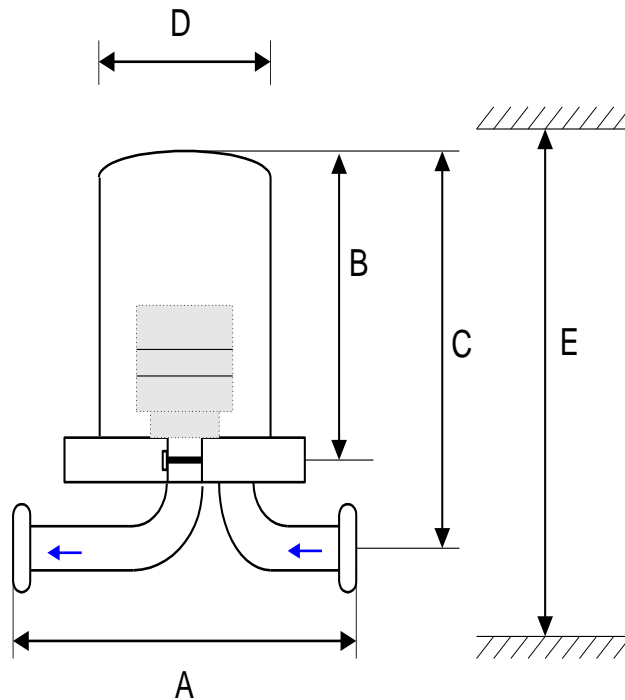
Photo of PDF-606
without housing cover



Photo of PDF-602
element expanded to
show woven stainless
steel media.



MICROPURE® FILTRATION



PDF-602 Filter is illustrated.
 PDF-604 has 4 layers and uses the same housing.
 PDF-606 has 6 layers and uses the same housing.

Dimensions - Inches			Dimensions - Inches	
A	B	C	D	E
5.5	7	9	3	14"



Photo of Steam Filter Housing with 1/2 NPT Connections. Flow through housing is bidirectional, so you can install the filter in any orientation.



Picture of Drain Port on base of housing. A single drain valve or plug can be installed. Recommendation varies by application.



MICROPURE® FILTRATION

777 East 82nd Street Cleveland, OH 44103

952/472-2323 FAX: 952/472-0105

tsenney@micropure.com www.micropure.com