

Why you need filtered steam

To protect costly equipment, maintain processing efficiency and reduce downtime, it's important to remove scale and debris that are common in most systems. Filtered steam will protect valves, process equipment and process filters from damage.

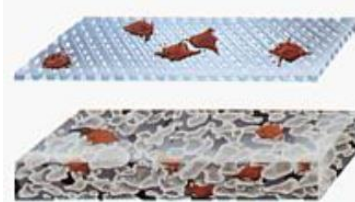
To protect product purity you need filtered steam. When filtered through a MICROPURE Steam Filter, steam used to agitate, mix or cook food will be free from contaminants which can spoil the appearance, smell or taste of your product.

How MICROPURE does it better

Woven stainless steel filter media – supported by stainless steel segmented discs in a stainless steel housing – maintains its integrity under conditions that cause conventional sintered media to disintegrate.

Unlike other filter media that has a shorter life and must be disposed or removed frequently for acid cleaning, MICROPURE filter media can be easily and repeatedly cleaned by backflushing for a full year under normal use. When replacement finally becomes necessary, the cost is considerably less than our competitors. **The reason:** only the media is replaced, not the entire element.

The picture to the right shows the difference between the two types of media. Our media (top image) traps all particles upstream where the competitor's filter element (bottom image) traps the particles. This causes the competitor's element to need cleanings more often and be less effective after cleanings. Our media has a one year warranty on strength and integrity.



MICROPURE has the filter size you need from 10 lbs/hr. to 100,000 lbs/hr. (at 100 psi, 1 um grade). If requirements change, you can often keep the same housing. By changing the media porosity or the number of segmented filter discs you can meet your new requirements. With MICROPURE, steam filtration is simple, effective and cost efficient.

No other filter offers this combination of features:

- Segmented design allows exchange of media to meet changing requirements, inspect elements, or to replace old elements
- Available in multiple sizes from 1 to 100 microns
- 4 element diameter sizes for compact filtration solutions.
- Single Housing Design
- Meets all 3-A standards
- Housing and Segmented Discs warranted for 5 years
- Bi-directional flow capability
- Built of high grade stainless steel- to tolerate extreme pressure and temperature variations for unlimited reusability
- Easy to design into virtually any process system



The patented segmented construction of MICROPURE filters offers significant advantages over conventional cartridge filters (shown above). Steam flows into the openings on the outside of each segment disc and passes through the filter and into an adjacent disc. Filtered steam exits through the opening at the center of the cartridge, free from contaminants that can affect the quality of your product.

Flow Rate Information

Flow rate information based on saturated steam at 29.8 psia (250°F)/2.1 bar (121°C). For other pressures, please consult the table below.

	Temperature	Pressure		PSID Multiplier
		PSIA	BAR	
	212°F 100°C	14.7	1.0	1.4
	284°F 140°C	52.4	3.6	.7
	320°F 160°C	89.6	6.2	.5
	356°F 180°C	145.4	10.0	.3

Warranty

Micropure Filtration, Inc. provides a five year limited warranty on all parts except O-rings and media. A one year warranty on filter media is based on periodic backflushing to prevent overloading. These warranties extend only to components purchased from Micropure or a certified Micropure Filtration Vendor.

Ordering Information

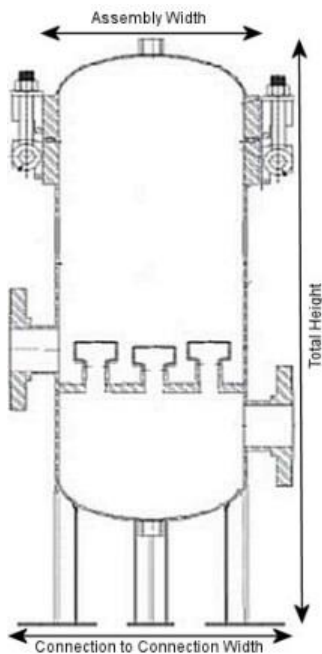
Please contact us by phone or email to set up an evaluation of your steam system requirements and proper filter sizing.



837 East 79th Street Cleveland Ohio 44103
 (800)654-7873 (952)472-2323 Fax: (216)361-0500
tsenney@micropure.com Web:www.micropure.com

Technical Data

Maximum Operating Pressure	232 psig	16 bar
Maximum Differential Pressure	75 psid	5.2 bar
Maximum Reverse Pressure	75 psid	5.2 bar
Pore Sizes	1-100 micron.	
Material of Construction:		
Housing	304 SS	
Segmented Filter Discs	304 SS	
Filter Media	304 SS	
O-Rings	EPDM	



Filter Type	Elements	Height*	Assembly Width	Conn. to Conn. width
PDF-1442	3	43 5"	18"	32"
PDF-1448	3	43 5"	18"	32"
PDF-1454	3	43 5"	18"	32"
PDF-1460	3	43 5"	18"	32"
PDF-1466	3	43 5"	18"	32"
PDF-1472	3	43 5"	18"	32"
PDF-1478	3	48"	18"	32"
PDF-1484	3	48"	18"	32"
PDF-1490	3	48"	18"	32"
PDF-1496	3	48"	18"	32"
PDF-14102	3	48"	18"	32"
PDF-14108	3	48"	18"	32"
PDF-14110	5	48"	22"	36"
PDF-14120	5	48"	22"	36"
PDF-14130	5	48"	22"	36"
PDF-14140	5	48"	22"	36"
PDF-14150	5	48"	22"	36"
PDF-14160	5	48"	22"	36"
PDF-14170	5	48"	22"	36"
PDF-14180	5	48"	22"	36"
PDF-14182	7	48"	26"	40"
PDF-14196	7	48"	26"	40"
PDF-14210	7	48"	26"	40"
PDF-14224	7	48"	26"	40"
PDF-14238	7	48"	26"	40"
PDF-14252	7	48"	26"	40"